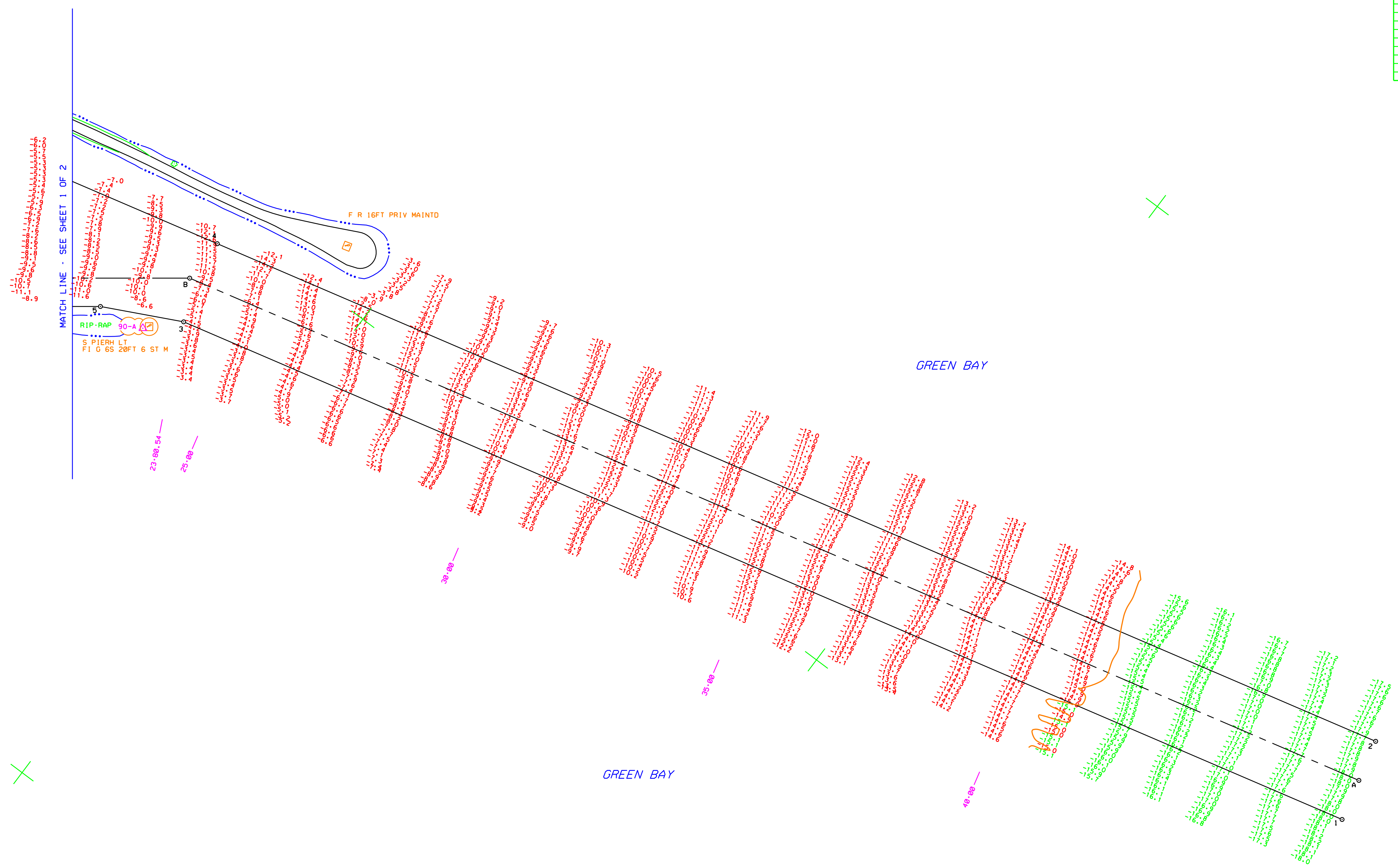
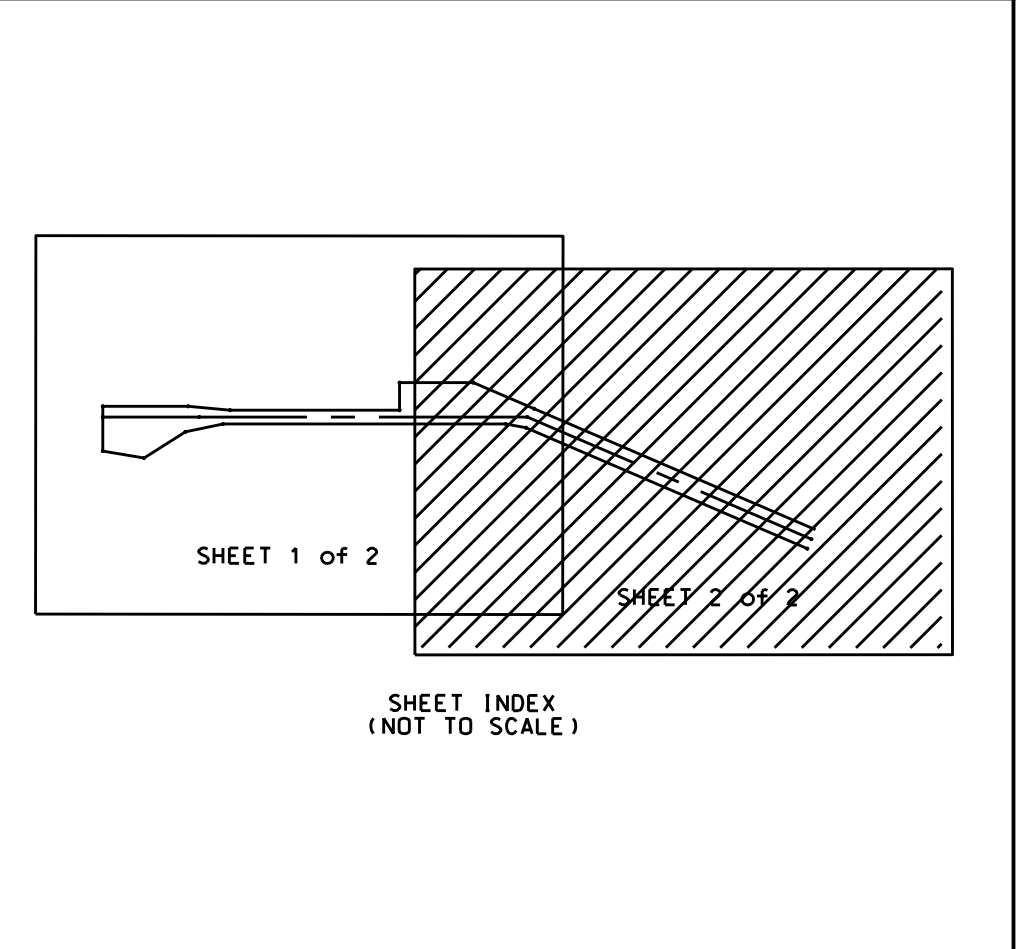
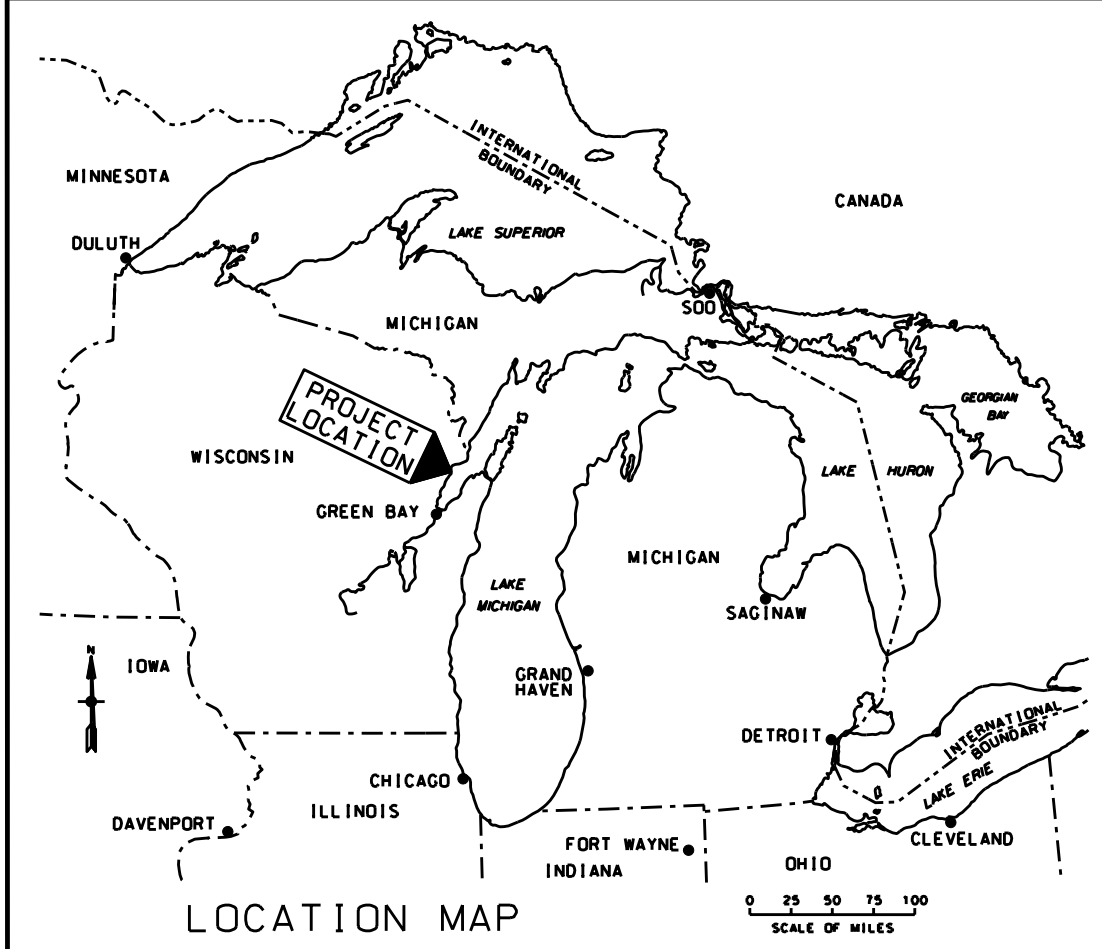


COORDINATE TABLE			
STA.	DESCRIPTION	COORDINATES	
		NORTH (Y)	EAST (X)
1	CHANNEL POINT	395331.49	2534509.73
3	CHANNEL POINT	395806.65	2532750.22
5	CHANNEL POINT	395740.15	2532616.05
13	CHANNEL POINT	394508.57	2532977.89
6	CHANNEL POINT	395839.23	2532249.14
4	CHANNEL POINT	395952.40	2532714.80
2	CHANNEL POINT	396477.23	2534874.31
A	CENTERLINE PT.	396404.36	2534892.02
B	CENTERLINE PT.	395874.64	2532712.42
C	CENTERLINE PT.	394444.67	2533809.22
30-A	BRONZE DISK	395754.36	2532699.46



K.A.O.
33-C6
59
20SEP11



LEGEND

FIXED NAVIGATION AID	□
SURVEY CONTROL (GPS MONUMENT)	△
CHANNEL POINT	○
TREE	⊙
FENCE	—
EDGE OF WATER	----

THE SURVEY SHOWN WAS CONDUCTED BY THE LAKE MICHIGAN AREA OFFICE, KEWAUNEE SUB OFFICE SURVEY PARTY ON 17 AUGUST 2011, USING GPS POSITIONING, AN INNSPACE 448 SOUNDER, AND A HYPACK HYDROGRAPHIC SURVEY SYSTEM.

NOTES:

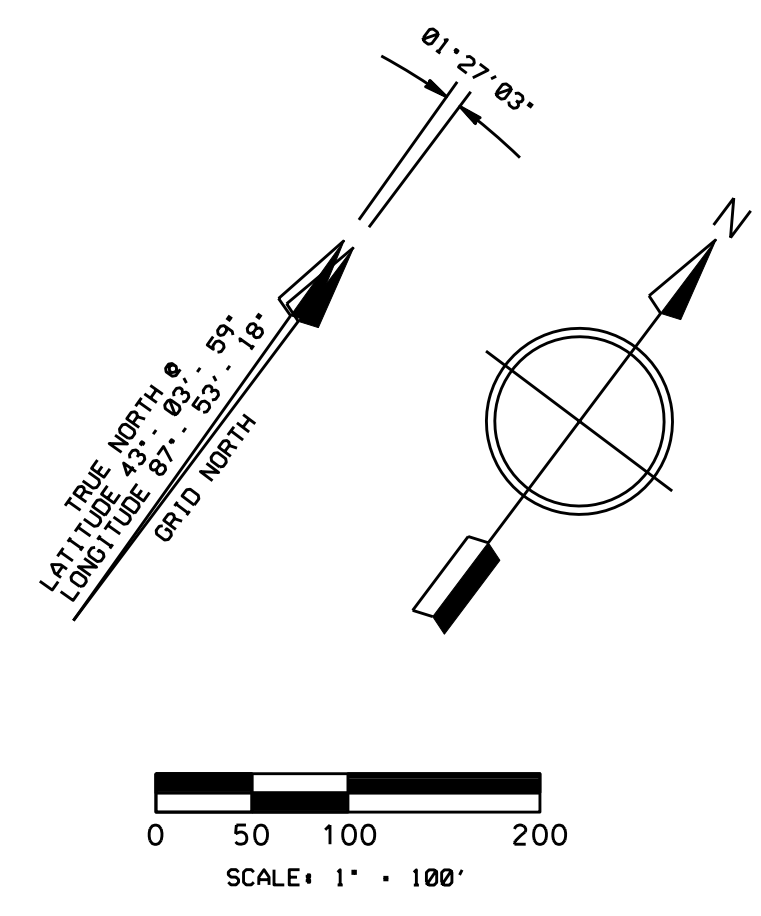
SURVEY CONTROL AND BENCH MARK DATA IS AVAILABLE FROM THE DETROIT DISTRICT, ENGINEERING & TECHNICAL SERVICES, OPERATIONS TECHNICAL SUPPORT BRANCH, LAKE MICHIGAN AREA OFFICE, KEWAUNEE SUB OFFICE.

THE COORDINATE GRID SYSTEM SHOWN IS REFERENCED TO THE WISCONSIN STATE PLANE COORDINATE SYSTEM, LAMBERT PROJECTION, CENTRAL ZONE (4802), NORTH AMERICAN DATUM 1983 (NAD83), US FOOT.

ALL SOUNDINGS ARE IN FEET AND ARE REFERENCED TO LOW WATER DATUM ELEVATION, 577.5 FEET ABOVE MEAN WATER LEVEL AT RIMOUSKI, QUEBEC (INTERNATIONAL GREAT LAKES DATUM 1985).

PROJECT DEPTH FOR THIS AREA IS 15.0 FEET

THE INFORMATION DEPICTED ON THIS MAP REPRESENTS THE RESULTS OF SURVEYS MADE ON THE DATES INDICATED AND CAN ONLY BE CONSIDERED AS INDICATING THE GENERAL CONDITIONS PRESENT AT THAT TIME.



NO.	DATE	REVISION	BY
U.S. ARMY ENGINEER DISTRICT, DETROIT CORPS OF ENGINEERS DETROIT, MICHIGAN			
DESIGNED BY: R. J. R.		OCONTO HARBOR, WISCONSIN CONDITION OF CHANNEL - AUG 2011 LAKE MICHIGAN AREA OFFICE	
DRAWN BY: R. D. M.			
CHECKED BY: A. R. M.			
REVIEWED BY:			
SUBMITTED BY:			
APPROVED:		APPROVAL RECOMMENDED:	
SCALE AS SHOWN		DRAWING NUMBER	
SHEET 2 OF 2			